

# Salvation Army Plans Citadel at Henderson-Bowman

A new Salvation Army Citadel is soon to be erected on the corner of Henderson Highway and Bowman. The new building was designed by Duncan Rattray, Peters and Searle and will be built by B. F. Klussen Construction Co. It is hoped that work will begin this week.

The Citadel will provide a new place of worship for the congregation that now meets in the old hall, 205 Hespeler ave.

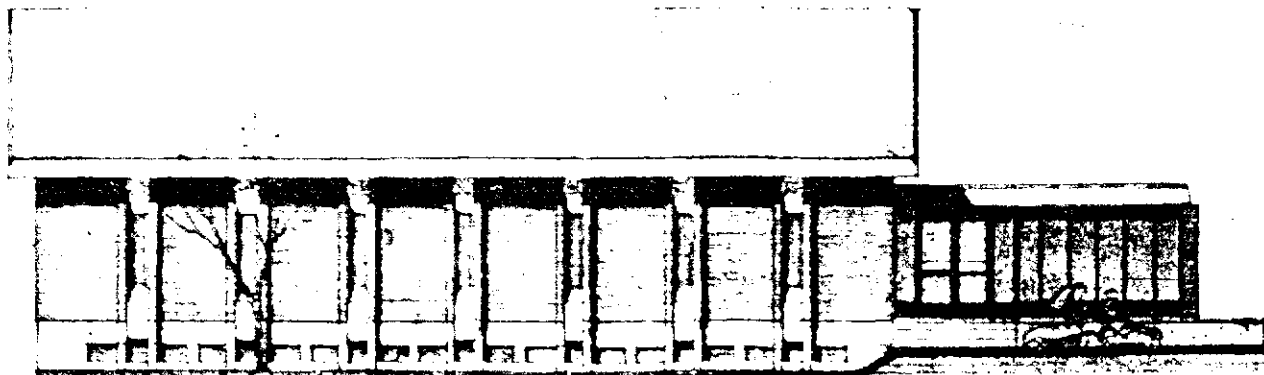
The Salvation Army has worked in the community from this location for over 50 years. Since the new building will be much larger, and provide many improved facilities, the people are anxious for the day they will move to the new location.

The project will cost in the neighborhood of \$138,000. The chapel itself will seat approximately 160 people. There will also be a large area for youth

work as well as offices and rooms to accommodate the band and choir.

Captain Doug. Moore, Corps Officer of the Elmwood Corps for the past four-and-a-half years, feels that moving to the new location will improve the Army's effectiveness in the area.

The Elmwood Corps serves the section of the city including Elmwood, East Kildonan, North Kildonan and Transcona.



ARTIST'S SKETCH OF NEW SALVATION ARMY BUILDING