

NEW ANGLICAN CHURCH.

**St. Saviour's is Name of New Parish
—Opening Friday Next.**

The latest addition to the Anglican churches of the Winnipeg district is St. Saviour's, Morse place, East Kildonan. This progressive little community is situated about 15 minutes' walk northeast of the end of the Park line-Elmwood car route, and is composed mainly of English people.

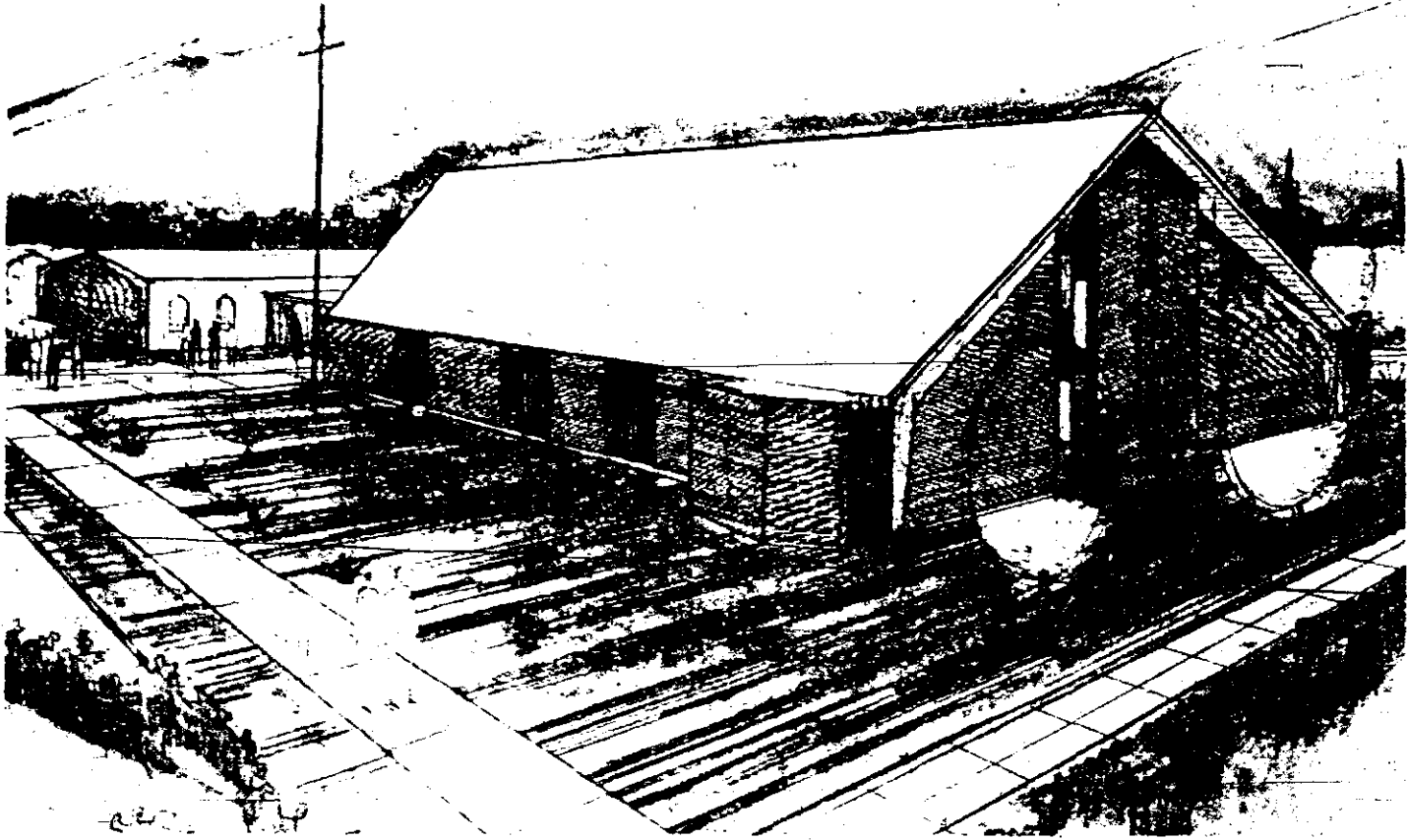
The new church is the result of less than a year's work in the locality, and has been built by members of the congregation during the past month by volunteer labor. The funds for the building have been contributed to generously by friends in England, and although times are hard, it is anticipated that the building will be opened free of debt.

The opening service is to be held on Friday next, April 30, when the special preacher will be the rural dean of Winnipeg, Rev. R. B. McElheran. On the Sunday following Rev. T. Marshall will administer the Holy Communion and preach at the 11 o'clock service, while the preacher in the evening will be Rev. Canon Gill, of St. John's college.

On Wednesday, May 5, the Women's Auxiliary is to hold a sale of work and social in aid of the building fund, following which an evening concert will be given by the choir of St. Stephen's, East Kildonan, the neighboring parish.

ST. GEORGE'S CONCERT.

Oct 1962



ARTIST'S SKETCH OF NEW PROPOSED ST. SAVIOUR'S ANGLICAN CHURCH

At a parish meeting held on Oct. 18th it was resolved that a new church of St. Saviour's be erected on the site of the existing structure at the corner of Munroe and Grey.

The plan, approved by the meeting, was drawn up by Messrs. Plumpton, Nipper &

Associates, and envisages a building seating in excess of 300 persons.

On a structural concrete base, the building will be of brick, with laminated wood beams. The altar will be illuminated from the side by day-light through cathedral glass

panels and the interior of the church by concealed artificial light.

The nave will run east to west, and the new building will be joined by a narthex to the existing structure which will be moved through ninety degrees from its present

position.

The narthex will provide entrance hall and cloakroom, and the adjoining existing structure will become parish hall.

It is hoped that construction will be started at the earliest opportunity.

18-10-62